

# WELCOME to Mrs. Regas' Class



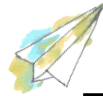
## Go Spartans!

### Teacher Contact Information

**Mrs. Regas**  
aregas@summithill.org  
(815) 469-4330



Please don't hesitate to  
contact me with any questions!



### A Little About Me

This is my 7<sup>th</sup> year teaching the TIP  
program at SHJH. I believe a  
classroom should be comfortable and  
inspiring as well as a safe place to  
learn, make mistakes, and grow.  
Being an educator is a never ending  
learning process and I learn right  
along with my students. I value  
building meaningful relationships with  
my students and their families  
because what they say is true...It  
takes a village.

### Our Goals This Year:



- having a growth mindset  
for learning
- trying our best every day
- not giving up
- being realistic
- learning to set personal  
goals
- being a classroom citizen



### Math



UNIT 1 – OPERATIONS AND  
ALGEBRAIC THINKING  
UNIT 2 – BASE TEN  
UNIT 3 – FRACTIONS  
UNIT 4 – MEASUREMENT AND DATA  
UNIT 5 – GEOMETRY

### Science



UNIT 1 – LIFE SCIENCE  
UNIT 2 – EARTH AND SPACE

### Language Arts



- BECAUSE OF WINN DIXIE
- OTHER NOVEL UNITS TBD
- THE WRITING PROCESS
- CONTEXT CLUES
- CHARACTER TRAITS
- THEMES & MAIN IDEAS
- PLOT/STORY ELEMENTS



### Social Studies

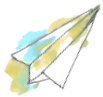
UNIT 1 – PRECOLONIZATION  
UNIT 2 – U.S. CONSTITUTION  
UNIT 3 – RECONSTRUCTION

## Grading

### Formatives (25% of final grade)

Consist of daily bell-ringers, entrance and exit tickets, classwork, practice (homework), and participation.

**Summatives (75% of final grade)** Consist of tests, quizzes, extended assignments, projects



### 50% Rule

The lowest grade that can be given is a 50%. If an assignment is missing, incomplete, or the actual score is below 50% it will be noted in the comment section of the assignment.

## Reassessments



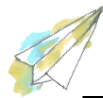
Students have the right to the opportunity for a summative reassessment if they earned a D/F on the assessment.

Students are also given one reassessment per quarter for a C or higher. A summative Reassessment Form must be completed by the student.



## NWEA & AIMS Web

Students will take the NWEA assessment 3 times a year (Fall, Winter, Spring). Student progress will be monitored regularly using AIMS Web. Both assessments will measure Reading and Math skills



### NEWSLA

NEWSLA is a website that makes real news articles accessible to students by allowing them to change the Lexile level of the articles. Students will create their own accounts which will be used in ELA, Science, and Social Studies. Students can also use this resource for their articles in Health.

### IXL

IXL is a standards based learning website that provides immediate feedback on very specific skills in Reading, ELA, and Math. Students will have their own login so this resource can be used at home as well.

Skills that directly align to student IEP goals and skills that are being targeted in class will be marked with a star



## Weekly Newsletter

I will send home a weekly newsletter previewing the week ahead. It will also be posted on my teacher page. Items on the newsletter are not necessarily set in stone and may change throughout the week.



### Growth Mindset

In our classroom and school we practice a growth mindset. Growth mindset is about the power of "yet" and perseverance. Through hard work and dedication we are all able to make gains and accomplishments in and outside of the classroom.

### Bell Ringers



Each class will begin with a bell ringer. Students are expected to be in their seats and working on them when the bell rings. Bell Ringers will be collected and entered as a weekly grade in the gradebook.



### Super Improvers

Super Improvers is an incentive system that celebrates student's academic successes or the achievement of personal goals. Rewards include a sticker and a small piece of candy. When they level up they can earn other rewards such as teacher's chair.