

**SUMMIT HILL SCHOOL DISTRICT 161
BOARD OF EDUCATION POLICY MANUAL
TABLE OF CONTENTS
SECTION 3 - GENERAL SCHOOL ADMINISTRATION**

3:10	Goals and Objectives
3:20	OPEN
3:30	Chain of Command
3:40	Superintendent
3:50	Administrative Personnel Other Than the Superintendent
3:60	Administrative Responsibility of the Building Principal
3:70	Succession of Authority

General School Administration

Goals and Objectives

The Superintendent directs the administration in the management of the School District and to facilitate the implementation of a quality educational program in alignment with School Board policy 1:30, *School District Philosophy*. Specific goals and objectives are to:

1. Provide educational expertise.
2. Plan, organize, implement, and evaluate educational programs that will provide for students' mastery of the Illinois Learning Standards.
3. Meet or exceed student performance and academic improvement goals established by the Board.
4. Develop and maintain channels for communication between the school and community.
5. Develop an administrative procedures manual and handbooks for personnel and students that are in alignment with Board policy.
6. Manage the District's fiscal and business activities to ensure financial health, cost-effectiveness, and protection of the District's assets.
7. Provide for the proper use, reasonable care, and appropriate maintenance of the District's real and personal property, including buildings, equipment, and supplies.

LEGAL REF.: 105 ILCS 5/10-16.7, 5/10-21.4, and 5/10-21.4a.

CROSS REF.: 1:30 (School District Philosophy), 2:20 (Powers and Duties of the School Board; Indemnification), 2:130 (Board Superintendent Relationship), 3:40 (Superintendent), 3:50 (Administrative Personnel Other Than the Superintendent), 3:60 (Administrative Responsibility of the Building Principal), 6:10 (Educational Philosophy and Objectives)

ADOPTED: January 26, 2005

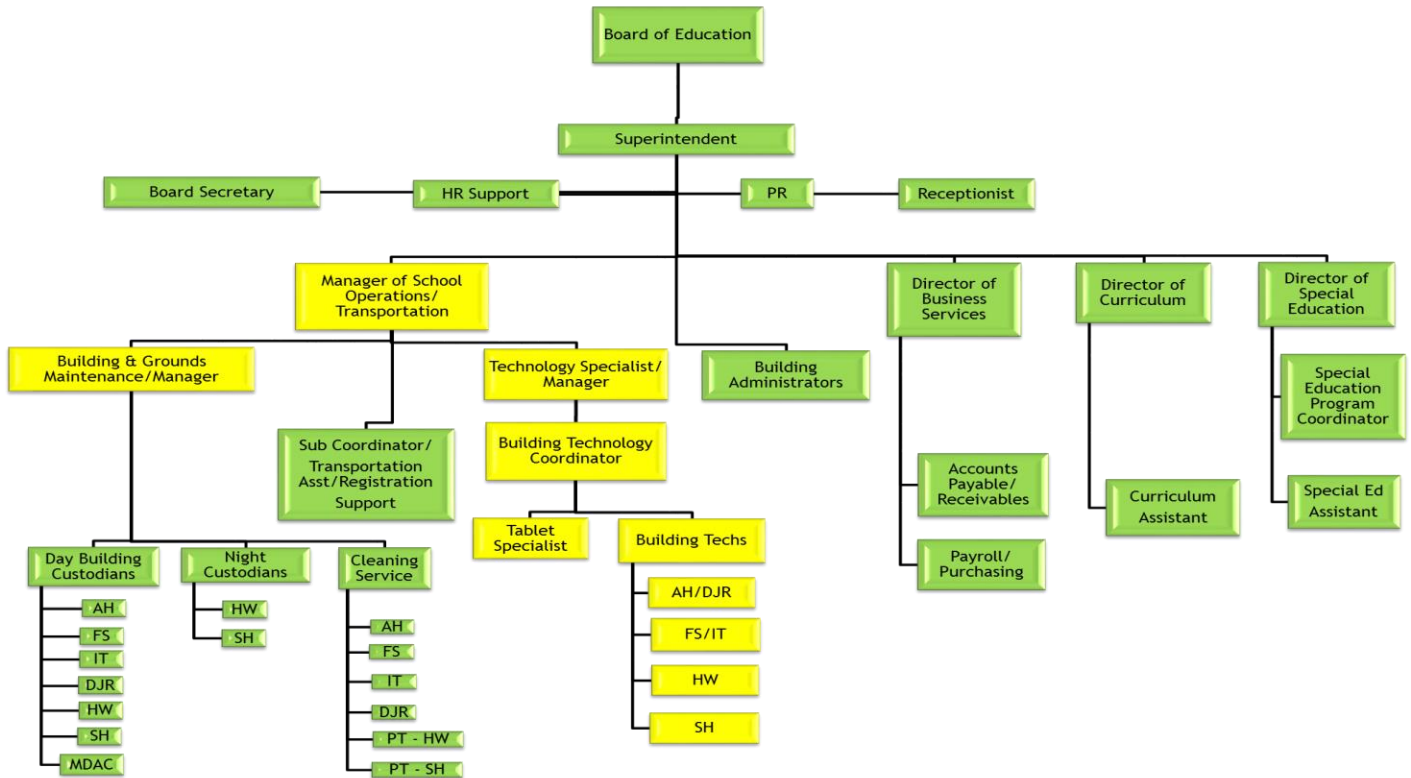
REVISED: January 24, 2007
September 28, 2011
November 13, 2013
September 14, 2016
October 16, 2019

General School Administration

Chain of Command

The Superintendent shall develop an organizational chart indicating the channels of authority and reporting relationships for school personnel. These channels should be followed, and no level should be bypassed except in unusual situations.

All personnel should refer matters requiring administrative action to the responsible administrator, and may appeal a decision to a higher administrative officer. Whenever possible, each employee should be responsible to only one immediate supervisor. When this is not possible, the division of responsibility must be clear.



CROSS REF.: 1:20 (District Organization, Operations, and Cooperative Agreements), 2:140 (Communications To and From the Board), 3:70 (Succession of Authority), 8:110 (Public Suggestions and Concerns)

ADOPTED: January 26, 2005
 REVISED: September 28, 2011
 December 14, 2011
 November 13, 2013
 September 14, 2016

General School Administration

Superintendent

Duties and Authority

The Superintendent is the District's executive officer and is responsible for the administration and management of the District schools in accordance with School Board policies and directives, and State and federal law. District management duties include, without limitation, preparing, submitting, publishing, and posting reports and notifications as required by State and federal law. The Superintendent is authorized to develop administrative procedures and take other action as needed to implement Board policy and otherwise fulfill his or her responsibilities. The Superintendent may delegate to other District staff members the exercise of any powers and the discharge of any duties imposed upon the Superintendent by Board policies or by Board vote. The delegation of power or duty, however, shall not relieve the Superintendent of responsibility for the action that was delegated.

Qualifications

The Superintendent must be of good character and of unquestionable morals and integrity. The Superintendent shall have the experience and the skills necessary to work effectively with the Board, District employees, students, and the community. The Superintendent must have and maintain a Professional Educator License with a superintendent endorsement issued by the Illinois State Educator Preparation and Licensure Board.

Evaluation

The Board will evaluate, at least annually, the Superintendent's performance and effectiveness, using standards and objectives developed by the Superintendent and Board that are consistent with the Board's policies and the Superintendent's contract. A specific time should be designated for a formal evaluation session with all Board members present. The evaluation should include a discussion of professional strengths as well as performance areas needing improvement.

The Superintendent shall annually present evidence of professional growth through attendance at educational conferences, in-service training, or similar continuing education pursuits.

Compensation and Benefits

The Board and the Superintendent shall enter into an employment agreement that conforms to Board policy and State law. This contract shall govern the employment relationship between the Board and the Superintendent. The terms of the Superintendent's employment agreement, when in conflict with this policy, will control.

LEGAL REF.: 105 ILCS 5/10-16.7, 5/10-20.47, 5/10-21.4, 5/10-23.8, 5/21B-20, 5/21B-25, 5/24-11, and 5/24A-3.
23 Ill.Admin.Code §§1.310, 1.705, and 25.355.

CROSS REF: 2:20 (Powers and Duties of the School Board; Indemnification), 2:130 (Board-Superintendent Relationship), 2:240 (Board Policy Development), 3:10 (Goals and Objectives)

ADOPTED: January 26, 2005

REVISED: January 13, 2010
October 27, 2010
July 11, 2012
November 13, 2013
August 12, 2015
February 22, 2017
January 23, 2019
February 17, 2021

General School Administration

Administrative Personnel Other Than the Superintendent

Duties and Authority

The School Board establishes District administrative and supervisory positions in accordance with the District's needs and State law. This policy applies to all administrators other than the Superintendent, including without limitation, Building Principals. The general duties and authority of each administrative or supervisory position are approved by the Board, upon the Superintendent's recommendation, and contained in the respective position's job description. In the event of a conflict, State law and/or the administrator's employment agreement shall control.

Qualifications

All administrative personnel shall be appropriately licensed and shall meet all applicable requirements contained in State law and Illinois State Board of Education rules.

Evaluation

The Superintendent or designee shall evaluate all administrative personnel and make employment and salary recommendations to the Board.

Administrators shall annually present evidence to the Superintendent of professional growth through attendance at educational conferences, additional schooling, in-service training, and Illinois Administrators' Academy courses, or through other means as approved by the Superintendent.

Administrative Work Year

The work year for administrators shall be the same as the District's fiscal year, July 1 through June 30, unless otherwise stated in the employment agreement. In addition to legal holidays, administrators shall have vacation periods as approved by the Superintendent. All administrators shall be available for work when their services are necessary.

Compensation and Benefits

The Board and each administrator shall enter into an employment agreement that complies with Board policy and State law. The terms of an individual employment contract, when in conflict with this policy, will control.

The Board will consider the Superintendent's recommendations when setting compensation for individual administrators. These recommendations should be presented to the Board no later than the March Board meeting or at such earlier time that will allow the Board to consider contract renewal and nonrenewal issues.

Unless stated otherwise in individual employment contracts, all benefits and leaves of absence available to teaching personnel are available to administrative personnel.

LEGAL REF: 105 ILCS 5/10-21.4a, 5/10-23.8a, 5/10-23.8b, 5/21B, and 5/24A.
23 Ill.Admin.Code §§1.310, 1.705, and 50.300; and Parts 25 and 29.

CROSS REF: 3:60 (Administrative Responsibility of the Building Principal), 5:30 (Hiring Process and Criteria), 5:250 (Leaves of Absence)

ADOPTED: January 26, 2005

REVISED: October 25, 2006
April 6, 2011
November 13, 2013
August 12, 2015
February 22, 2017
March 18, 2020

General School Administration

Administrative Responsibility of the Building Principal

Duties and Authority

The School Board, upon the recommendation of the Superintendent, employs Building Principals as the chief administrators and instructional leaders of their assigned schools, and may employ Assistant Principals. The primary responsibility of a Building Principal is the improvement of instruction. Each Building Principal shall perform all duties as described in State law as well as such other duties as specified in his or her employment agreement or as the Superintendent may assign, that are consistent with the Building Principal's education and training. Each Building Principal and Assistant Principal shall complete State law requirements to be a prequalified evaluator before conducting an evaluation of a teacher or assistant principal.

Evaluation Plan

The Superintendent or designee shall implement an evaluation plan for Principals and Assistant Principals that complies with Section 24A-15 of the School Code and relevant Illinois State Board of Education rules. Using that plan, the Superintendent or designee shall evaluate each Building Principal and Assistant Principal. The Superintendent or designee may conduct additional evaluations.

Qualifications and Other Terms and Conditions of Employment

Qualifications and other terms and conditions of employment are found in Board policy 3:50, *Administrative Personnel Other Than the Superintendent*.

LEGAL REF.: 10 ILCS 5/4-6.2.
105 ILCS 5/2-3.53a, 5/10-20.14, 5/10-21.4a, 5/10-23.8a, 5/10-23.8b, and
5/24A-15.
105 ILCS 127/.
23 Ill.Admin.Code Parts 35 and 50, Subpart D.

CROSS REF.: 3:50 (Administrative Personnel Other Than the Superintendent), 5:250
(Leaves of Absence)

ADOPTED: January 26, 2005
REVISED: January 24, 2007
April 6, 2011
December 14, 2011
November 13, 2013
February 12, 2014
August 12, 2015
October 16, 2019

General School Administration

Succession of Authority

If the Superintendent, Building Principal, or other administrator is temporarily unavailable, the succession of authority and responsibility of the respective office shall follow a succession plan, developed by the Superintendent and submitted to the School Board.

Superintendent

Director of Special Education in collaboration with District 843 Director

Director of Curriculum in collaboration with District 843 Director

Director of Finance in collaboration with District 843 Director

Building Principal

SHJH – if Principal is unavailable, AP is in charge, if AP is unavailable
Walker Principal is in charge

Walker – if Principal is unavailable, AP is in charge, if AP is unavailable
SHJH Principal is in charge

Elementary Buildings – Director of Special Education and or
Curriculum Director would be on call

CROSS REF.: 1:20 (District Organization, Operations, and Cooperative Agreements), 3:30
(Chain of Command)

ADOPTED: January 26, 2005
REVISED: September 28, 2011
December 14, 2011
November 13, 2013
April 26, 2017